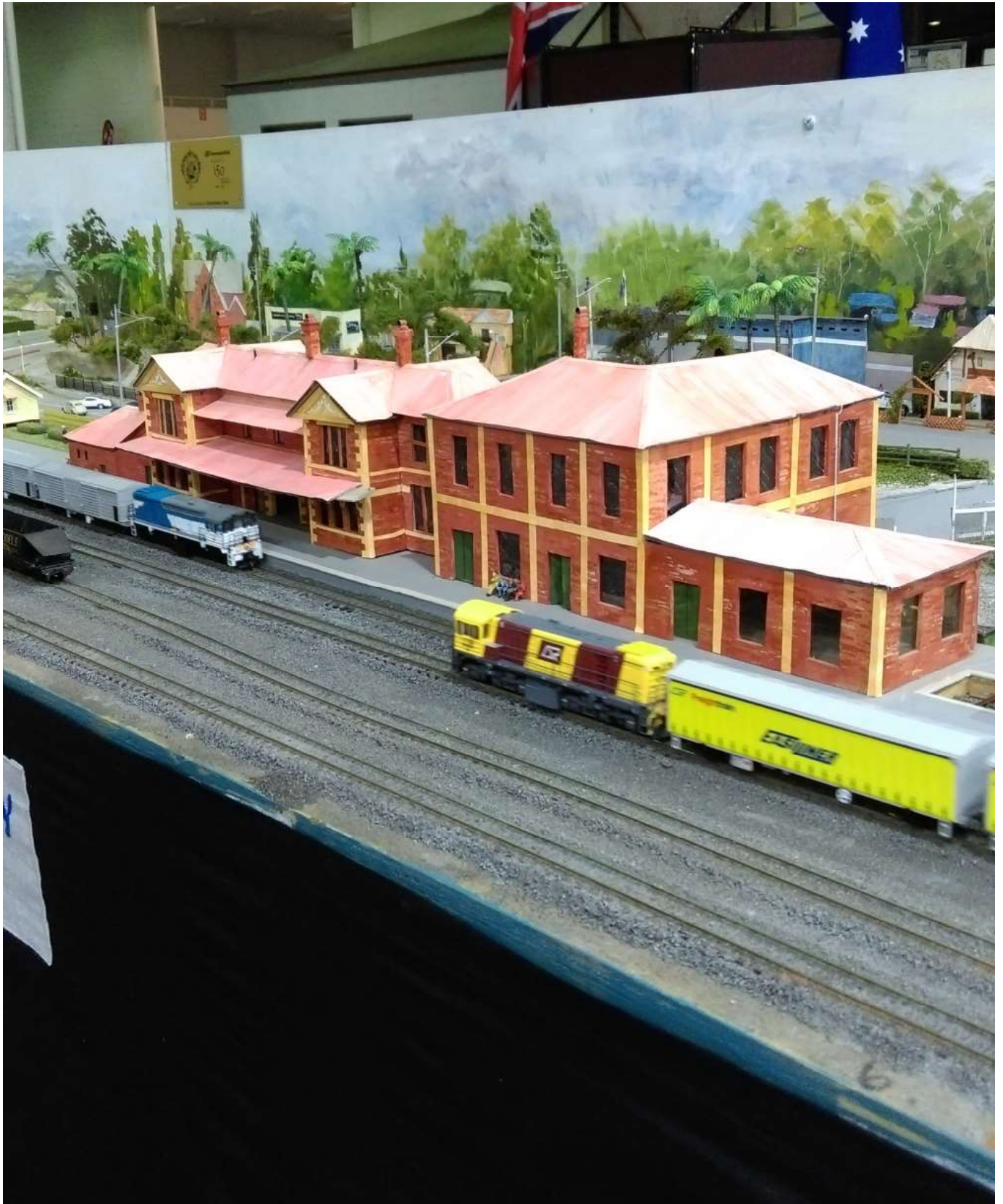




Produced by Enthusiasts
for Enthusiasts

TRAIN TALK

August 2023 Volume 35 No 1 Issue 385
A 100% NMRA Affiliated Club





A 100% NMRA Affiliated Club

'Train Talk' Volume 35 No 1 (issue 385)
August 2023
ABN 32 998 681 418

Email; secretarytmrc@gmail.com

Facebook; Toowoomba Model Railway Club

Phone: 0467 494 105

Disclaimer: The opinions expressed in 'Train Talk' are not necessarily the opinions of the TMRC Inc. or its members.

PLEASE NOTE: Any personal items left and/or used at the club premises or events attended and/or organised by the club are the responsibility of the owner of said items. The TMRC Inc. Takes no responsibility for any loss or damage thereof. MOTION:04/02/03.

Toowoomba Model Railway Club Inc.
All correspondence mailed to:
TMRC Inc.
PO Box 883
Toowoomba Qld 4350

MEMBERSHIP FEES

Ordinary @ \$100.00*

For Twelve Months

(*Includes basic NMRA membership

=

\$30.00 for Public Liability Insurance)

Please note; schedules for club activities are notified in Train Talk - RAILWAY TIMETABLE - Page 38, and via email, if you have an email address and are not on our members email list, please advise ASAP so you can receive up to date news. Send to email; secretarytmrc@gmail.com
Phone: 07 4638 0397

President

David Lewis

Vice President

Grant Hirning

Secretary

Benjamin Martin

Treasurer

Jeff Fritz

Committee

Charles Clarke

David Cook

Angela Martin

Gary Sardoni

TABLE OF CONTENTS

- | | |
|---|--|
| 4. Presidents Report (David Lewis) | (John Lebsanft) |
| 4. What's in a name? (Terry Hicks) | 36. XPT Transfers (Arthur Hayes/Andy Warren) |
| 5. Teditorial (Teditor) | 37. Depression Living (www) |
| 6. On The Footplate | 38. OOPS! (www) |
| 7. Drayton Harbour News (Gary Sardoni) | 40. Railway Advertising Poster (www) |
| 11. 2021 EXPO (Perry Rolton) | |
| 13. Great Northwestern Loop Steam Tour (Arthur Hayes/Andy Warren) | |
| 17. QR's YK Cattle Wagons (Arthur Hayes) | |
| 20. Railway Pic's (As Credited) | |
| 24. DH56 (Arthur Hayes) | |
| 25. Modellers Corner (Malcolm Jenkins) | |
| 27. Rail Mishaps (www) | |
| 28. TRIBUTE (Les Downey) | |
| 29. Full Frontal (www) | |
| 30. Sand Drying Facility (www) | |
| 31. Lumber Jacks, Forestry & Trains | |

ADVERTISER INDEX:

- | | |
|------------|---------------------------------------|
| 3 | Wuiske Promotions |
| 5 | 4AK/4WK Toowoomba |
| 6 | Jenny Noble Marriage Celebrant |
| 6 | Jurgen Engel |
| 37 | Ted's Decals |
| 39. | QLD's Narrower Gauges |

COVER: Jeff Fritz took this photo of Garden City Central at the Australian Model Railway Associations 2021 Brisbane Model Train Show.

SET #4 HOn3½

These Queensland Starter Sets are designed to allow all, young or old, to enter the hobby.

This set contains the following,

1 Original QR Blue 90 Tonne Locomotive

2 Original QR QSC Tautliner Wagons

1 QR QSC Tautliner in Q-LINK Livery

This set is sold Ready To Run in HOn3½ (HOM) gauge and is ready to be used with ALL brands of HOn3½, HOM and TT gauge track systems.

These sets come with detailed operating

and running in instructions. These sets represent a saving of \$95.00 off the normal recommended retail price.



SET #5 HOn3½

These Queensland Starter Sets are designed to allow all, young or old, to enter the hobby.

This set contains the following,

1 Original QR Blue 90 Tonne Locomotive

3 Original QR HJS Open Wagons in Grey Livery

This set is sold Ready To Run in HOn3½ (HOM) gauge and is ready to be used with ALL brands of HOn3½, HOM and TT gauge track systems. These sets come with detailed operating and running in

instructions. These sets represent a saving of \$95.00 off the normal recommended retail price.



Starter sets also available in HO Scale Standard Gauge (16.5mm)

Lots more on our Web Page; www.wuiskemodels.com

Queensland Railways

Ready To Run Models, DCC, Decals, Wuiske Models

Bogies, Accessories, Kits, Detail Parts, Scenery, DVDs.

Locomotives and rolling stock in 12mm and 16.5mm gauges

PO Box 131

Jandowae, Qld, 4410

Web: www.wuiskemodels.com

August 2023

4 President's Report June 2023

Dave Lewis

A busy month at the Club.

On the Drayton Harbour layout scenery is continuing around the mine area, and a new tunnel built to create a scenic break between two adjoining scenes.

On Twin Falls Repairs continuing to damaged buildings, starting repairs to the chewed wiring at the harbour end of the layout.



I have finished cleaning out the area behind the Byers Junction layout. Found boxes of N scale Structures in a very poor state of repair, so I took them home and cleaned them off with hot soapy water and repaired what was worth saving. I added several buildings to the layout, sold 4 for \$20.00 to a visitor who came in as I was sorting them out, and the rest will be sold. Also found several boxes of scenic materials stashed away and that can be used on the HO layout.

The Trix-Twin display in the Museum looks great and the descriptive notes are very interesting.

More new books in the library this time on Australian railways and stories of life on the railways by the people involved

Dave.

What's in a name?

Terry Hicks

Steam Engine driver back in the 40`s

"So what`s yer name? asked the train driver

"Charlie,Sir"

" I don't address my Fireman by their Christian names,Son.

Give me your surname '

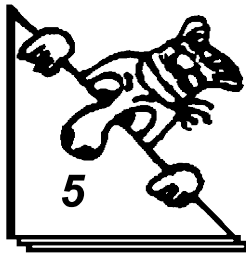
"Darling,Sir.

"Okay, Charlie, Start Shovelling .

August 2023



TEDITORIAL



You looked straight at the photo didn't you, certainly an attention getter.

Catching up now which has been a challenge, the magazine is almost looking like a specialist Queensland Railways publication thanks to the incredible articles submitted by Arthur Hayes, on the other hand Arthur also contributes other articles that feature magnificent photos courtesy of Andy Warren, Andy's generosity in allowing the use of his photos is certainly appreciated.

All the Western Australian Railway Photos are also a boon to us for the approved use and there are so many to choose from complete issues could feature just the photos from those collections.



When I realised it was a shopping bag I had missed my Train !!!!!!!!!!!!!

In the June issue at the bottom of page 27 was a couple of photos of work by Les Downey, during the release of that issue I was advised that Les had just passed away of long term illness, I feel privileged to have spoken to Les about a week before he left us and he remained positive but realised the end was in site, on page 28 of this issue you will find more of Les' wonderful vehicle modelling, I feel proud to have known Les and will feature as many of his projects as I can get hold of.



There have been railway articles by Les in past issues of Train Talk, I know I have more photos of his vehicle work but unfortunately I don't think I have any more actual articles by Les, Rest in piece.



Tune in for the best of sounds for everyone's likes 4AK and 4WK - Your stations!
August 2023



ON THE FOOTPLATE

Member participation is an important part of the clubs success, become involved and reap the benefits.

There are many projects underway to suit any interests.

Club Shirts: If you wish to obtain a club shirt of the Chambray type, purchase direct from Totally Workwear Toowoomba, 1/37 Prescott St.

There is a policy at the TMRC Inc. You **"MUST HAVE FUN"**, say g'day to everyone and invite them to 'get involved', we are all in this hobby for the same reason - "To have fun"

Model Railroading 'IS' The World's Greatest Hobby.

The production of Train Talk and Construction of the Showgrounds Museum & Display Centre has been made possible through the generosity of the



Marriage Celebrant

Jenny Noble
Authorised & Qualified
Ph: 0428 273 165

Helping to make your day special!!



Jurgen Engel

**[Http://www.jurgenengel.com](http://www.jurgenengel.com)
jurgenengel@y7mail.com**

P.O Box 262, Nambucca Heads, NSW, 2448.

10 bucks flat rate post on all orders Australia wide...

August 2023

“DRAYTON HARBOUR NEWS” 7

Gary Sardoni

As I have mentioned in previous reports, completing all the fine detail when modelling a scene can be very time consuming. When the scene appears to be 'almost' completed, it's easy to think that the finished product is just around the corner, when in fact it is much further away. This is an example of the 80/20 rule, whereby a job becomes 80% complete in 20% of the total time, but getting the other 20% completed takes 80% of the total time.

My original plan was to have "Hooker Hill" township completed in time for the Toowoomba Show in late March. The 80/20 rule got in the way there, so the next target is to complete it in time for our open weekend in early June. Although I have got close to meeting this target, I still haven't made it. I trust that the attached images will show that I am almost there.



I will outline the improvements that have been made since the last report. Stone wing walls have been added to the tunnels at either end of the scene. The tunnel 'faces' have been painted over and might get some brickwork added around the arches, but doing that will be a bit fiddly. The name board for Waterhouse Tunnel will be reinstated.



3 Closeup "Semi"

Road markings such as centrelines and parking bays have been added to the road. These have been done using the usual "Gary method" where white paper strips approximately 1.5 mm wide are cut with a craft knife and then glued in place with PVA glue. While these strips scale up to be slightly wider than real road markings, the discrepancy is not great. I find that cutting the strips thinner makes them much

harder to work with, so 1.5 mm strips is a compromise that I am comfortable with.

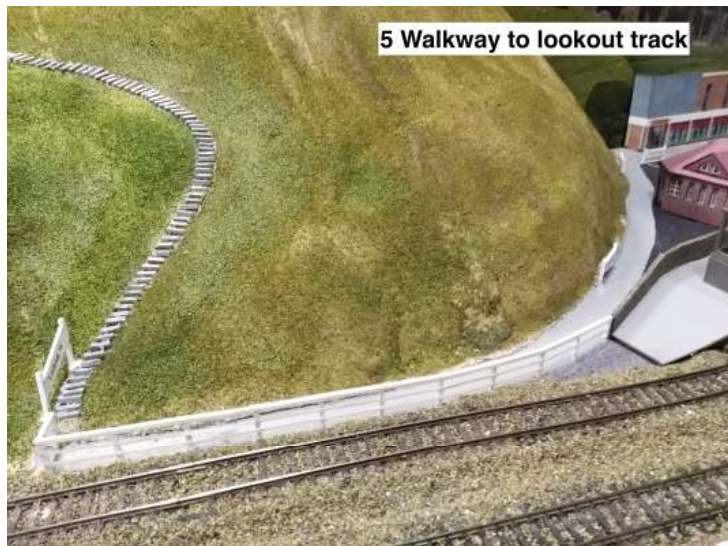
Fencing has been added along both sides of the rail tracks. This is recycled donated material but looks acceptable. Scatter and more trees have been added (from our stock of donated items).

Signage for streets and walkways has been made (from "Evergreen" strip and sheet) and planted. (Some of the images were taken immediately after the signs were planted and white PVA glue around the bases is visible. This will fade to clear as the glue dries.)



4 Shops behind station

A pathway from the station and town to the base of the lookout walking track has been created. Where this path runs along the side of this track, a fence (made from "Evergreen" strip and sheet) has been built and planted. This will prevent pedestrians from accidentally wandering onto the railway tracks.

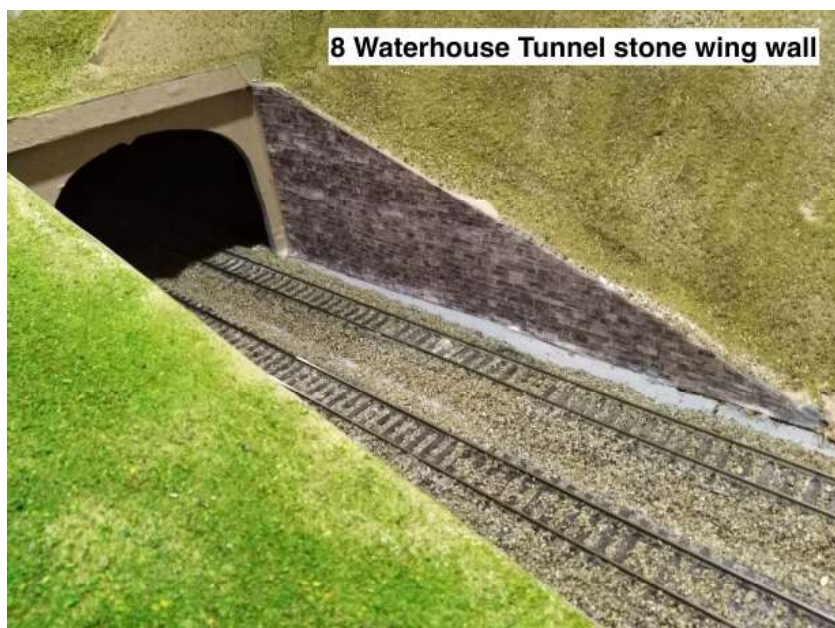


The (steep) walking track to the lookout has been formed. The bottom part of the track is the steepest and has steps cut from "Evergreen" strip. The remainder of the track has been painted onto the hillside it traverses. A fellow club member jokingly referred to it as the "stairway to heaven". By coincidence, its appearance reminds me of walking tracks in the fells of the Lake District in northern England.

be populated. While the lookout scene at the top of the hill does have people in position admiring the view, the township itself is currently deserted. We do have quite a few figures ready to 'go', but time is needed to organise them into cameo scenes, which will improve the scene considerably. As well as 'standard' townspeople, I believe that we actually do have a couple of fell walkers with walking poles. They can be strategically positioned somewhere on the walking track.

Hopefully, the next report will show a bit more progress as I finally try to get the job completed.

A final word: Try not to be too



judgmental about the quality of the scenery etc. The camera is a very cruel device. Everywhere one looks there are obvious imperfections in the modelling, but the camera seems to exaggerate them. While these imperfections are real, they are less obvious to someone looking at the scenes directly rather than images of them. A layout which has images that don't show imperfections is a quality layout indeed!



7 “Stairway to heaven”



2021 EXPO ¹¹

Perry Rolton



August 2023

Continued on page 12



Great Northwestern Loop steam tour June 2021 Sydney

13

Arthur Hayes

A sunny winters morning around Maitland from Andy Warren's camera.
Details of the Great Northwestern Loop Tour.



© andy warren 25.06.2021

Package Inclusions

25 June 2021 - 6 days - from Sydney

Daylight service aboard your steam-hauled heritage train from Sydney to Tamworth, Binnaway, Dubbo, Orange, Bathurst and return

Unlimited tea, coffee and water throughout your journey

Visit by coach to the historic Tocal Homestead for morning tea and a short tour

2 nights Tamworth accommodation at Ibis Styles Tamworth (or similar) with dinner on the first night and breakfast daily

Day trip to Nundle by coach including touring and lunch at the historic Peel Inn

Guided tour of Nundle Woollen Mill

Exclusive afternoon tea at Wombramurra Homestead

Exclusive dinner and show featuring thirteen-time CMAA Golden Guitar winner Luke O'Shea at the DAG Sheep Station in Nundle

Entry to the Rail Journeys Museum at Werris Creek

Lunch at Binnaway Bowling Club

Onboard tastings and sales by the team from Black Gate Distillery, Mendooran

1 night Dubbo accommodation at Cattlemans Motor Inn (or similar) with dinner and breakfast

August 2023

Continued on page 14

14 *Continued from page 13*

Tour of Taronga Western Plains Zoo with light lunch
2 nights accommodation at Mercure Orange (or similar) with breakfast daily supplied by Café Latte
Day tour by coach to Millthorpe with lunch at Tonic Restaurant
Farewell dinner at Philip Shaw Winery
Lunch at The Victoria Hotel at Bathurst
Entry to the Bathurst Railway Museum
Group coach transfers throughout
Meals as per the itinerary
Cruise Express Tour Managers







YK Cattle Wagon ¹⁷

Arthur Hayes

I only saw one of these quaint 26' cattle wagons, it was at the back of Ipswich Workshops. I guess it had completed its last run and was on the way to Wulkuraka for scrapping.

In researching the class I have been able to locate a number of photos of the wagons in service. John Armstrong book "Wooden Wagons of the Queensland Railways 1880 -1980" details a colourful history. Most started life as six wheeled "J" cattle wagons in 1882 and could carry 12 head of cattle. That was 12 months before the first bogie "K" class cattle wagon. Both were built similar fitted with a roof and a single door. When fitted with 4 foot "AW" bar frame bogies around 1894 they became the KJ class. Some were converted to NM sheep wagons for a couple of years in the Northern Division as drought relief. Like the early "K" wagons some were fitted with double doors, some received half side doors for coke/sleepers traffic. Around 1948 the roof was removed and became an open goods wagon as the "YJ" class. Again in 1951 the roof was restored to 11 wagons making them the "Y" class.

Y 3276 This wagon is fitted with the half doors

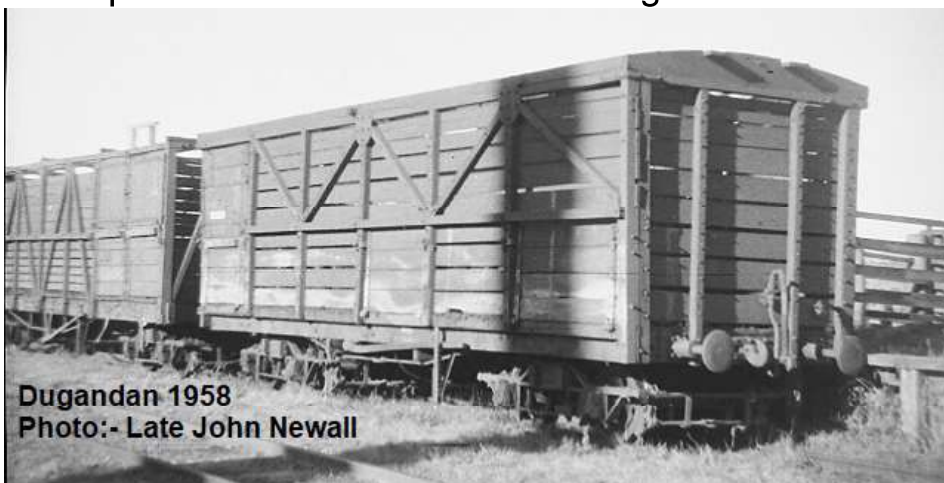
Loading/unloading these wagons must have been a nightmare in general goods traffic.

This wagon is at Newstead with a wagon of wool attached, hope it is empty.

1958 the roof was removed yet again and the wagons became a cattle wagon as the "YK" class. A small number lasted to about 1975. The back cover page of John's book has a photo of the double door "YK" wagon. The book is available from the ARHS Qld

on line book shop for \$29.95.

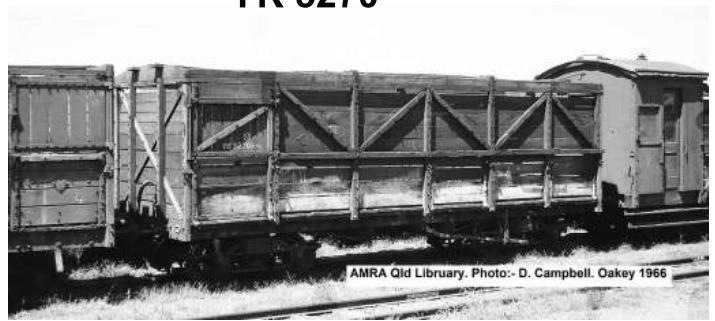
Dugandan (Fassifern Branch) 1958. Photo:- Late John Newall



YK 3269



YK 3270



I was talking with another modeller who was a work colleague in the 1970's, and he asked me "what are you doing"? I indicated that I was working on some YK wagons. He reply, didn't see to many of them, but he indicated he was working at Fernvale in 1962 during the great Queensland drought. YK wagons were loaded with hay and covered with tarps.

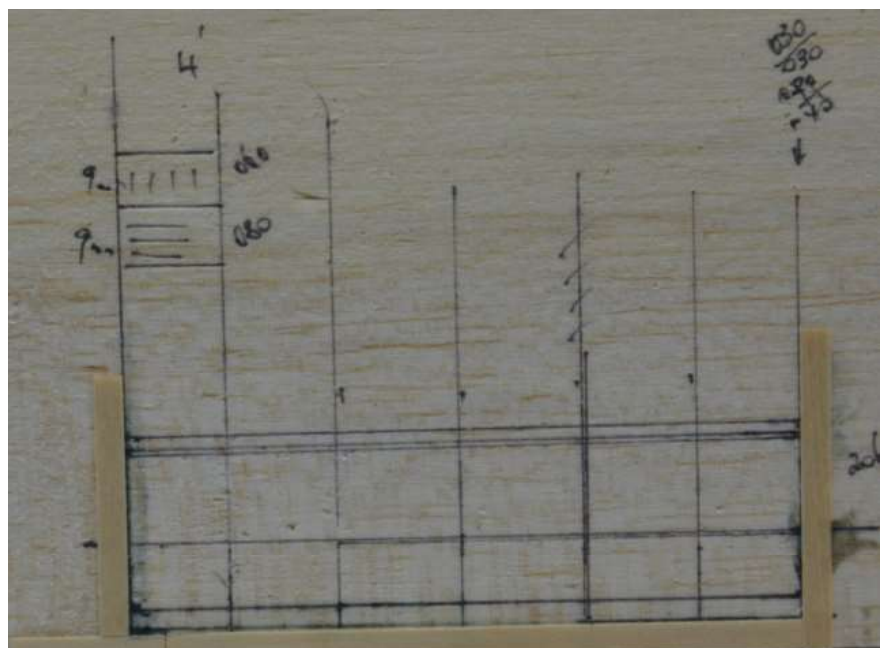
Hay was normally loaded into open wagons (F, H class etc.). Once the load extended about the side the bales would be stacked like a pyramid coming in half a bale for each tier to a maximum high of 8

feet. Instructions states as the ingress of water can lead to overheating and spontaneous combustion, special care must be taken with the use of tarpaulins to ensure that they completely cover the consignment. Where more than one tarpaulin is required, the overlap must be sufficient so that the water cannot entre. Plus, during the steam era, the tarp would prevent live cinders landing in the load.

I build three wagons using Evergreen scribed and strip styrene. The sides and ends were formed up in a jig along the lines of a "K" wagon format. Bogies and buffers are Caintode Flats.

All wagons were paint with PGC QGR Oxide.

Jig made from balsa and bass wood. Vertical lines are drawn in with a Sharpie (a fine point felt pen) before attaching the outside trim. Sizes of material can also be recorded on the jig, it help us old farts.



On this wagon the rivets were applied during construction (400 plus???) before painting. A mix of Archer and Micro-Mark,



don't look to close, they may not line up with a board???. I used a strip instead one by one. Weathering was a wash I made using Vallejo Model Colour and Armourall glass cleaner. The glass cleaner is ammonia free and was purchased from SuperCheap for about \$ 12.00. All wagons were hand printed with Dullcote first, stroking along the timber sides with the grain. No

set formula was used, a couple of spurts of cleaner with a drop of paint in a paint pallet. The first wash was applied by a small brush using Model Colour # 70.862 Black Grey. You need to wait



until the wash has dried to see if you want more. The white wash applied to the lower half of the sides and ends was Vallejo # 70.951 White. The 3D cattle poo was made using Vallejo Model Colour Khaki # 70.988 paint mixed in with Vallejo plastic pulley. The mix was randomly applied to the lower half of the wagon with a tooth pick. To finish off the wagon, the rivets on the top half had Model Colour # 70.941 Burnt Umber allied with a blunt pin. The point of the pin was stroked a couple of times with a file. A drop of paint was placed on a piece of scrap styrene, the pin was dipped into the paint and applied to the rivet.

20 RAILWAY PICS

All photos Western Australia

ACN4172/ ACN4147 on 1763 loaded Karara iron ore to Geraldton Port at the Murray Road level crossing at Koolanooka on 16 July 2023. Photo:



ACN4171 is the rear DPU loco on 1763 loaded Karara iron ore to Geraldton Port at Murray Road Koolanooka on 16 July 2023. Photo: Phil Melling.



Xa1402 "Targari" and the 0726 ex Armadale to Perth City at Welshpool on 30 March 1988. Photo: Phil Melling.



Lz3105 on MP5 at the south end of Forrestfield on 18 November 2006. Photo: Jim Bisdee.



This double door wagon had the rivets applied after painting, the black rivets looks good but I don't think it is prototypical X X X X . Weathering job coming up????



This wagon was built the same as the first, except I forgot the toe batons on the floor. Hearing the story of the hay at Fernvale, just had to have one. Scenic ground cover



was applied to a strip of styrene and inserted inside on the lower half. The traps is a used tea bag cut

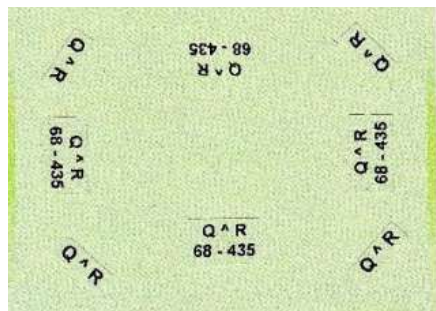
to size.

The standard size of tarpaulins in 1962 are as follows, small (distinguished by letter "A" before the number) 20' 5" by 14', Large 23' 3" by 17' (eight canvases). As from April 1962, newly manufactured tarpaulins have the serial number prefixed by the year of manufacture and large trap became the standard size.

Normally, I paint the tarp after I have add it to the wagon. There are a couple of issues with this method, painting over the sides and it can pull the tea bag into the



sides giving an unprototypical look, The tarp covers the sides and you should not see the ribs in the side of the wagon. This time around, the tarps were painted before being added to the wagon. One painted Vallejo Model Colour # 70.922 Uniform



Green and the other older traps was painted Model Colour # 70.881 Yellow/Green. The paint does soak through, be carefully your tarp doesn't stick to the item under it. I'm quite happy with the results, the tea bag folded freely. The tarp numbers were added once the traps were in place. The trap rope (Ratline) is paint brush bristles cut to size and secured with super glue. The

wagon was not weathered, going to Fernvale on the Brisbane Valley Line with train starting out of Ipswich North Yard, overhauled wagons coming from the workshops would be a good source to fill orders.

My wagons are built for operations, thus not much detail is added under the floor, only what is visible from the sides is added. Coupler boxes are built into the floor with a



reduced yoke, (a) to allow the coupler to fit between the wheels and (b) to reduce swing out when wagons are being pushed during shunting operations. On

the scales the wagons come in at 41 grams. Overall, some new methods were tried with a good result.

Currently the wagons are on the layout and can be found on trains in the latest YouTube video. <https://www.youtube.com/watch?v=4A2lvsEY5YM>

John Armstrong book "Wooden Wagons of the Queensland Railways 1880-1980" General Appendix; QR Loading of Freight Manual 1981 AMRA Qld Library





DH56

Arthur Hayes

After 25 years of sitting in the cupboard, my Far North Hobbies (Chivers) DH Kit has made it to the track.

Yes, the paint job could have been better, that's a learning curve with brass models new SMS Acrylic Lacquer.

At the weekend it headed off to Beaudesert on a couple of trains.

Many of you subscribe to the YouTube, but I don't who or how to find out who. (Old blokes and computers???)

<https://www.youtube.com/watch?v=b5h50006HVA>



August 2023



MODELLERS CORNER

25

Malcolm Jenkins

Here are some from last year's effort. You will perceive that I am building up the pre-airconditioned Overland.

I confess that not all projects charge ahead as fast as they could, hence quite a few decals as yet unused.

Also, probably more than half are for projects that I do for other people – I draw up the 3D models and make them available through Shapeways, and likewise the decals I draw up so that they are available, plus etched brass parts where relevant.

Quite a few of the recent projects have been to satisfy one person's private obsession, hence I don't yet have any photographs. I usually get at least one of everything I make, but some things I really just don't need!

I will send more as I get the decals on the rolling stock.





Rail Mishaps

27

www

A courier driver was injured in a collision with a freight train in Windsor Junction, N.S., Friday morning.

Officials on scene confirmed to CBC News the driver was taken to hospital in Lower Sackville with minor injuries after the collision at Lawrence Robinson Lane just after 10:30 a.m.



The train had been pulling hundreds of containers and was held up for about 45 minutes but has now cleared the scene, they said.

A Brightline train collided with a car carrier that stopped on the tracks, stranding passengers for several hours on Thursday.



Passengers were stuck on the train for more than two hours while engineers surveyed damage from the collision.

According to Fort Lauderdale Fire Rescue Battalion Chief Stephen Gollan, the driver of the truck may have been at fault,

telling WSVN “he was stopped on the tracks with one vehicle loaded on the trailer. The gates went down and he was unable to get the truck off of the tracks.”

August 2023



28 TRIBUTE

Hi Ted,

Just read in the August Train Talk Gary's praise for your decals and your humbled reply. I know you're not one for self promotion but while the subject is on the table how about giving yourself another plug just for good measure. I'm not looking for kudos but I think your efforts are worthy of lots of praise. The picture of the Ford studios van is by Trevor Corrin, the rest I took.

Regards,
Les



August 2023



FULL FRONTAL 29

WWW

There were forty five 1300 class Locomotives built by English Electric. These were numbered 1300 - 1344



August 2023



Sand Drying Facility

www

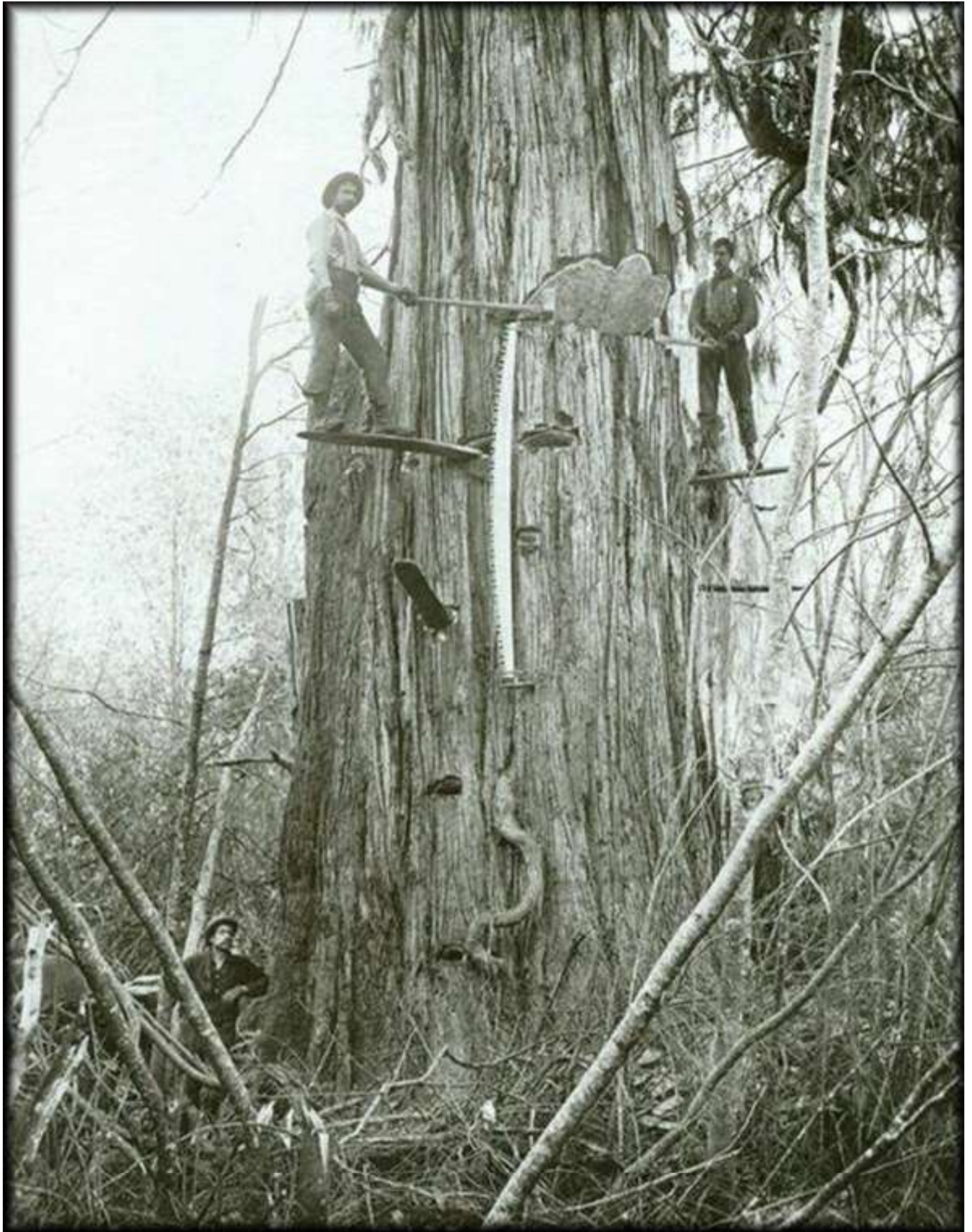
Last month we described the use of sand to assist locomotives in starting a heavy train.

Here is an interesting facility that would be ideal on a model railroad. The sand is obviously stored in the decrepit hopper and fed to the drying unit, I don't have any information relating to the dryer unfortunately.



Lumber jacks, forestry, & trains, Pac NW ³¹

John Lebsanft



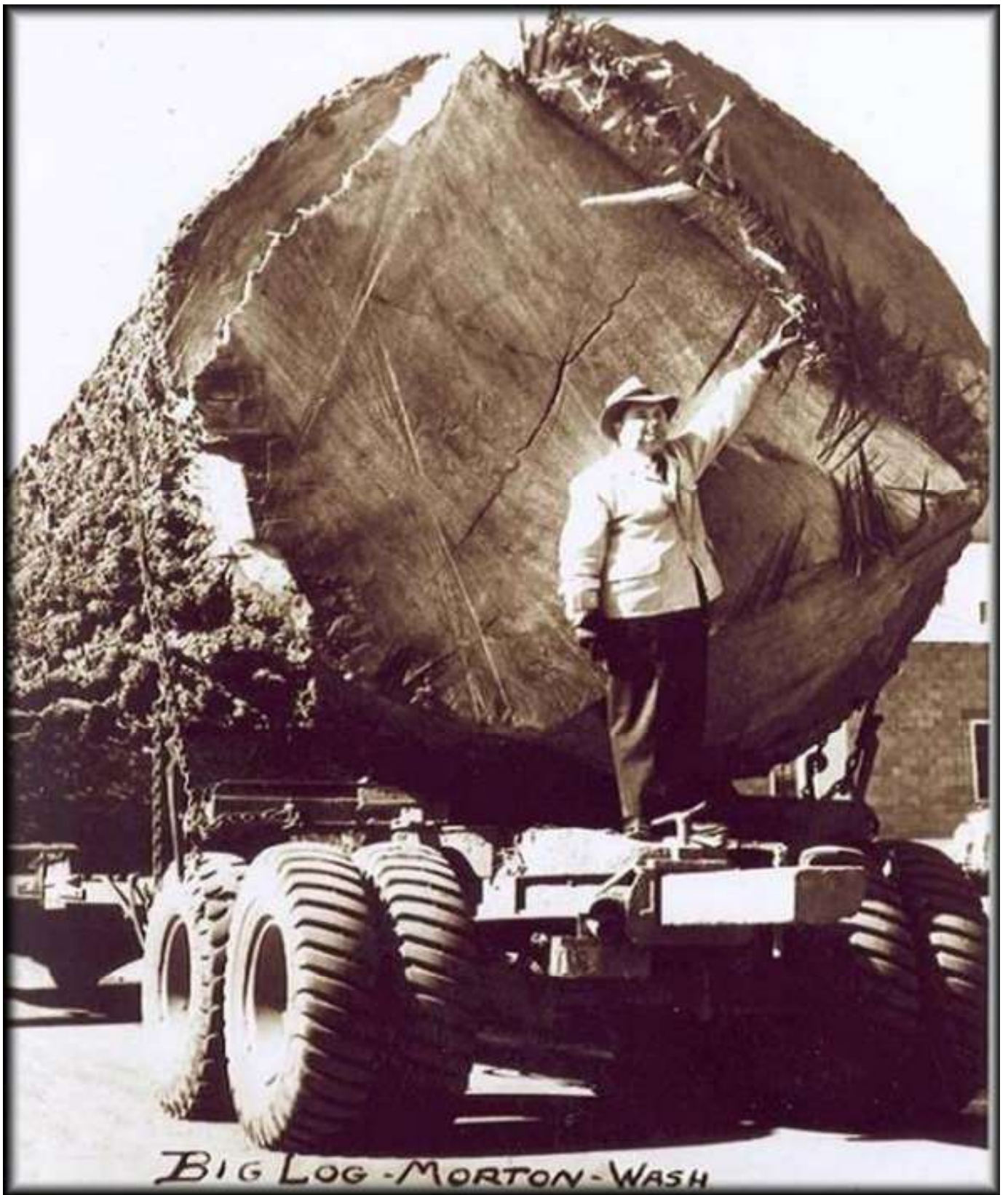
August 2023

Continued on page 32









XPT Transfers

Arthur Hayes

7L52 XPT transfer to Sydney from the Mid North Coast with 4827 and 4819.



© andy warren 29.03.2021

Another XPT transfer from NSW North Coast back to Sydney.
Train No. 6438N SCT003 & XPT 2006 & 2008. Thornton 31.03.2021



© andy warren 31.03.2021

August 2023



www

Depression era living in the United States of America



Ted's Decals

Custom Decals to order as well as a large range of in stock Queensland Railways 'C' Wagon, ABG and Tanker Decals

Also a selection of NSWGR's Decals

Look at eBay under - QR's Decal Set and See other items

Or contact me at teditor@bigpond.com

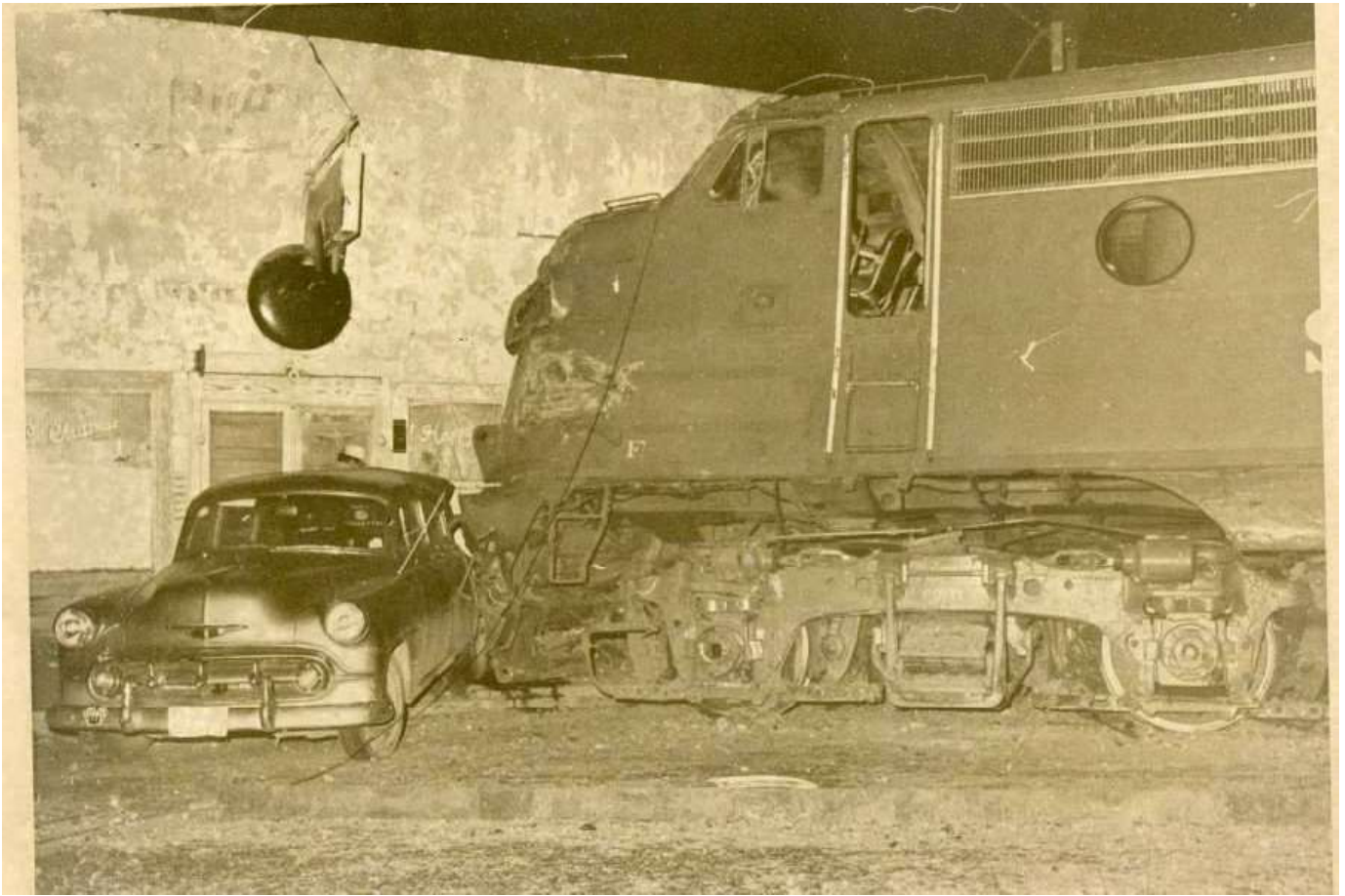


August 2023

OOPS!

Www

You come on our tracks, we come on your roads.



Explore

NOTE: - Dimensions ascertained by photogrammetry
exact accuracy not guaranteed

Queensland's Narrower Gauges

<https://www.zelmeroz.com/canesig/>

Scale 3/4 inch = 1 foot

<https://www.zelmeroz.com/mrhc/>

Drawn by Jim Fainges 2007
Information John Dennis
Digitized Jim Fainges 2007



© Lynn Zelmer

<https://www.archerparkrailmuseum.com/>

<https://www.angrms.org.au/>

<https://lrrsa.wildapricot.org/>

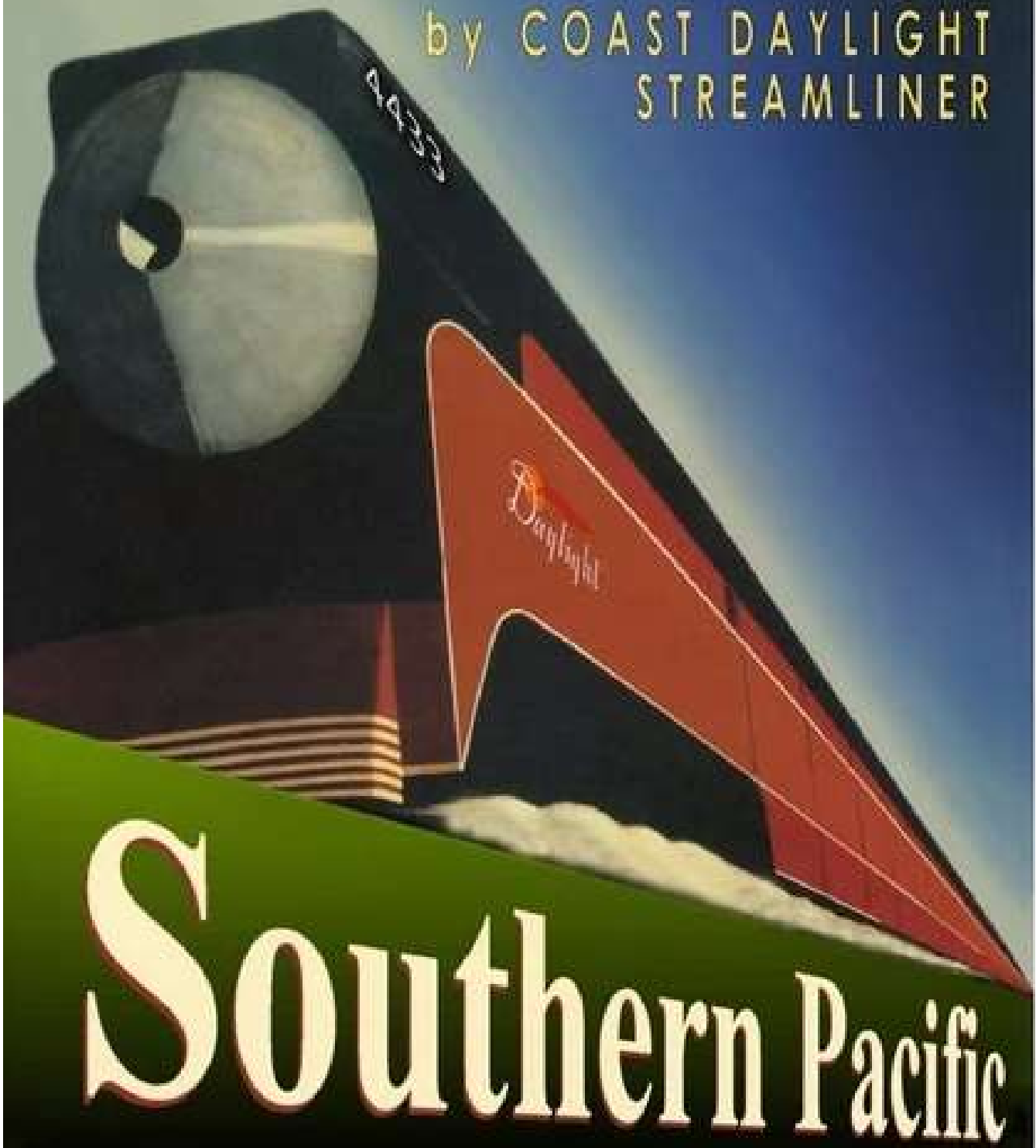


© Bill Blamin Collection

August 2023

LOS ANGELES to SAN FRANCISCO

by COAST DAYLIGHT
STREAMLINER



Southern Pacific

August 2023